

GES-P270 GES-P275

GES-P260 GES-P265 GES-P280

Polycrystalline Photovoltaic Module

Features

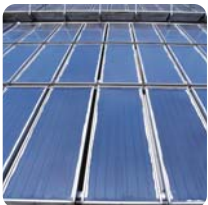
- High module efficiency and stable power output based on leading process technology
- Outstanding electrical performance under high-temperature conditions or low-irradiance conditions
- Ease of installation and all-weather applications due to the innovative engineering design

Applications

- On-grid utility systems
- On-grid commercial systems
- Off-grid residential systems

Quality and Warranty

- Peak power of single module is guaranteed in (0, +5)W power tolerance
- Rigorous quality control meets the highest international standard
- Product quality and liability are insured
- 5 years limited warranty on material and workmanship
- 12 years and 25 years limited warranty for minimum power output

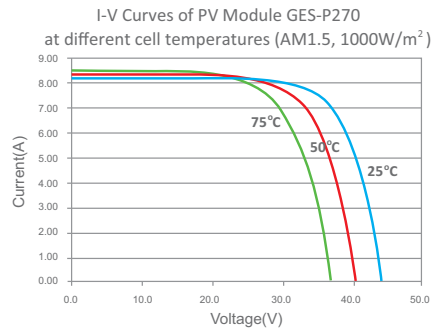
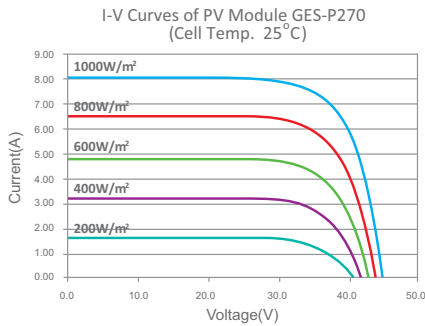


ELECTRICAL CHARACTERISTICS

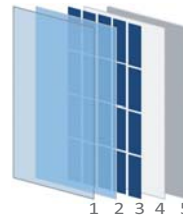
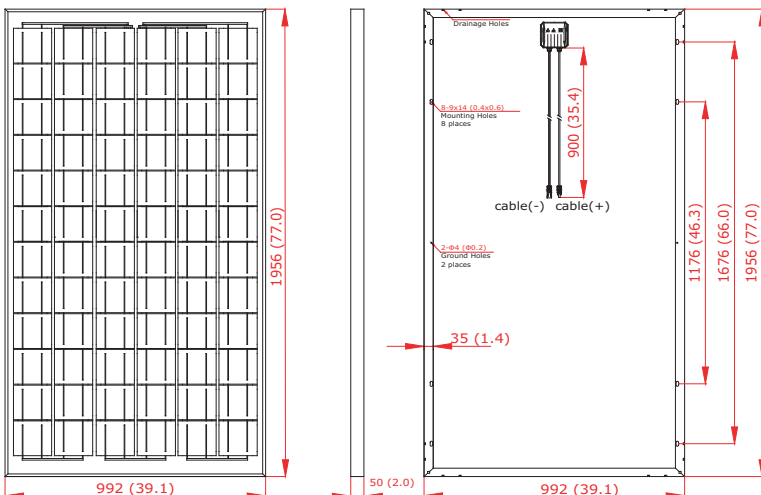
Module Type	Unit	GES-P260	GES-P265	GES-P270	GES-P275	GES-P280
Maximum Power (Pmax)	W	260	265	270	275	280
Power Tolerance	W	(0, +5)	(0, +5)	(0, +5)	(0, +5)	(0, +5)
Open Circuit Voltage (Voc)	V	44.0	44.3	44.5	44.6	44.8
Short Circuit Current (Isc)	A	8.09	8.15	8.20	8.25	8.33
Maximum Power Voltage (Vmp)	V	34.8	34.9	35.0	35.1	35.2
Maximum Power Current (Imp)	A	7.47	7.59	7.71	7.85	7.95
Module Efficiency (η_m)	%	13.4	13.7	13.9	14.2	14.4
Cell Technology	156mm x 156mm Polycrystalline Silicon; 72pcs (6x12)					
Pmax Temperature Coefficient	%/°C					-0.47
Voc Temperature Coefficient	%/°C					-0.34
Isc Temperature Coefficient	%/°C					+0.05
Maximum System Voltage	VDC					1000
Maximum Series Fuse Rating	A					13
Operating Temperature	°C					-40 ~ +85
NOCT	°C					45±2

STC: 1000W/m², AM1.5 and 25°C cell temperature; NOCT: Nominal Operating Cell Temperature

I-V CURVES



PHYSICAL CHARACTERISTICS Unit: mm(inch)



1. Tempered Glass
2. EVA (Ethylene Vinyl Acetate)
3. Solar Cells
4. EVA (Ethylene Vinyl Acetate)
5. Backsheet

Dimension	1956 x 992 x 50 mm (77.0 x 39.1 x 2.0 inch)
Weight	24 kg (52.9 lbs.)
Cable Length	900 mm (35.4 inch)
Bypass Diodes	3 pcs
Junction Box	IP65 rated
Front Glass	4.0 mm (0.2 inch) tempered low-iron glass
Frame	Anodized aluminum alloy

*Specifications are subjected to change without further notice