

GES-P220 GES-P225

GES-P230 GES-P235 GES-P240

Polycrystalline Photovoltaic Module

Features

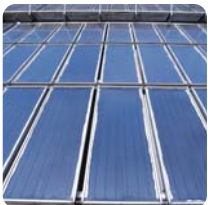
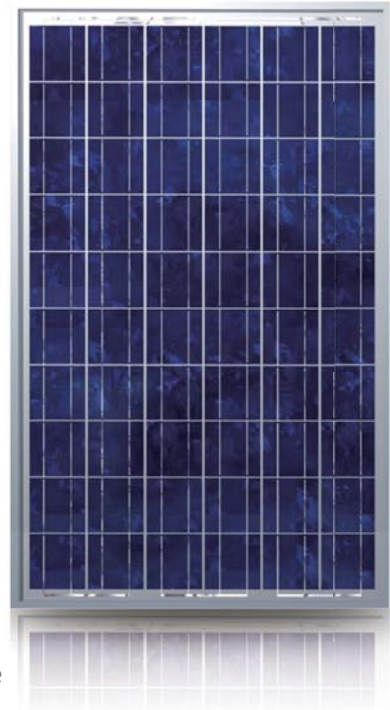
- High module efficiency and stable power output based on leading process technology
- Outstanding electrical performance under high-temperature conditions or low-irradiance conditions
- Ease of installation and all-weather applications due to the innovative engineering design

Applications

- On-grid utility systems
- On-grid commercial systems
- Off-grid residential systems

Quality and Warranty

- Peak power of single module is guaranteed in (0, +5)W power tolerance
- Rigorous quality control meets the highest international standard
- Product quality and liability are insured
- 5 years limited warranty on material and workmanship
- 12 years and 25 years limited warranty for minimum power output



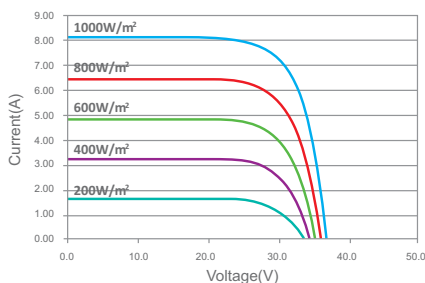
ELECTRICAL CHARACTERISTICS

Module Type	Unit	GES-P220	GES-P225	GES-P230	GES-P235	GES-P240
Maximum Power (Pmax)	W	220	225	230	235	240
Power Tolerance	W	(0, +5)	(0, +5)	(0, +5)	(0, +5)	(0, +5)
Open Circuit Voltage (Voc)	V	37.0	37.0	37.0	37.1	37.2
Short Circuit Current (Isc)	A	8.10	8.16	8.22	8.28	8.33
Maximum Power Voltage (Vmp)	V	29.5	29.7	29.8	30.0	30.2
Maximum Power Current (Imp)	A	7.45	7.59	7.73	7.84	7.95
Module Efficiency (η_m)	%	13.5	13.8	14.1	14.4	14.8
Cell Technology	156mm x 156mm Polycrystalline Silicon; 60pcs (6x10)					
Pmax Temperature Coefficient	%/°C					-0.47
Voc Temperature Coefficient	%/°C					-0.34
Isc Temperature Coefficient	%/°C					+0.05
Maximum System Voltage	VDC					1000
Maximum Series Fuse Rating	A					13
Operating Temperature	°C					-40 ~ +85
NOCT	°C					45±2

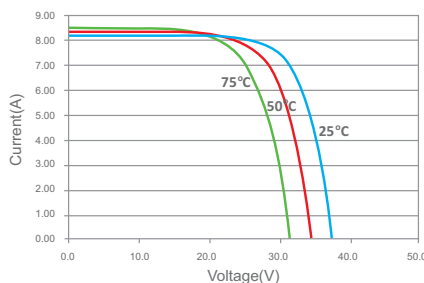
STC: 1000W/m², AM1.5 and 25°C cell temperature; NOCT: Nominal Operating Cell Temperature

I-V CURVES

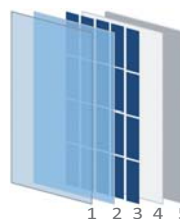
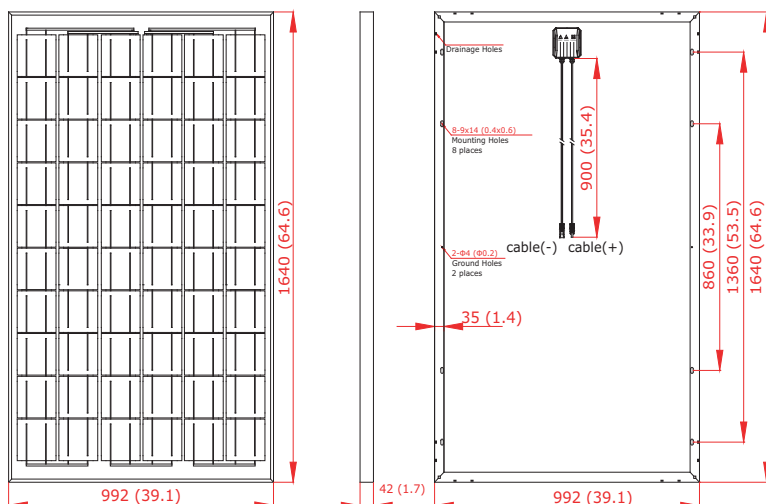
I-V Curves of PV Module GES-P220
(Cell Temp. 25°C)



I-V Curves of PV Module GES-P220
at different cell temperatures (AM1.5, 1000W/m²)



PHYSICAL CHARACTERISTICS Unit: mm(inch)



1. Tempered Glass
2. EVA (Ethylene Vinyl Acetate)
3. Solar Cells
4. EVA (Ethylene Vinyl Acetate)
5. Backsheet

Dimension	1640 x 992 x 42** mm (64.6 x 39.1 x 1.7 inch)
Weight	19.5 kg (43.0 lbs.)
Cable Length	900 mm (35.4 inch)
Bypass Diodes	3 pcs
Junction Box	IP65 rated
Front Glass	3.2 mm (0.1 inch) tempered low-iron glass
Frame	Anodized aluminum alloy

*Specifications are subjected to change without further notice
**50mm thickness aluminum frame is optional