

GES-P205 GES-P210

GES-P195 GES-P200 GES-P215

Polycrystalline Photovoltaic Module

Features

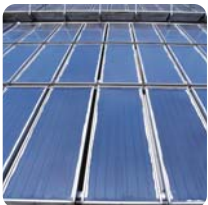
- High module efficiency and stable power output based on leading process technology
- Outstanding electrical performance under high-temperature conditions or low-irradiance conditions
- Ease of installation and all-weather applications due to the innovative engineering design

Applications

- On-grid utility systems
- On-grid commercial systems
- Off-grid residential systems

Quality and Warranty

- Peak power of single module is guaranteed in (0, +5)W power tolerance
- Rigorous quality control meets the highest international standard
- Product quality and liability are insured
- 5 years limited warranty on material and workmanship
- 12 years and 25 years limited warranty for minimum power output

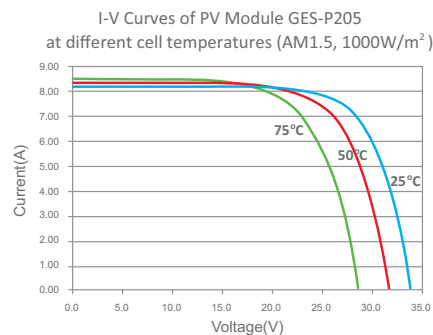
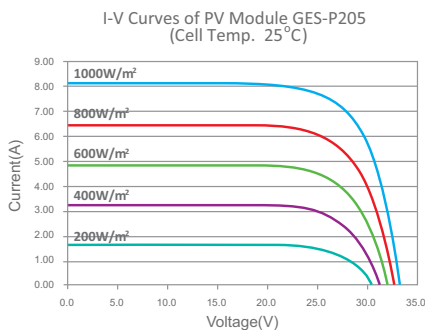


ELECTRICAL CHARACTERISTICS

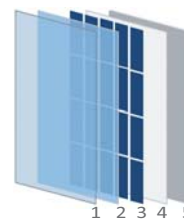
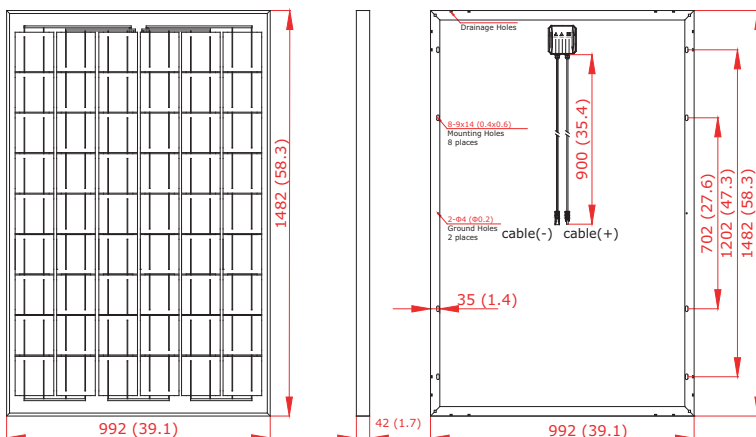
Module Type	Unit	GES-P195	GES-P200	GES-P205	GES-P210	GES-P215
Maximum Power (Pmax)	W	195	200	205	210	215
Power Tolerance	W	(0, +5)	(0, +5)	(0, +5)	(0, +5)	(0, +5)
Open Circuit Voltage (Voc)	V	32.2	33.4	33.5	33.6	33.7
Short Circuit Current (Isc)	A	8.00	8.12	8.23	8.33	8.34
Maximum Power Voltage (Vmp)	V	26.1	26.2	26.3	26.4	26.9
Maximum Power Current (Imp)	A	7.47	7.63	7.79	7.95	8.00
Module Efficiency (η_m)	%	13.3	13.6	13.9	14.3	14.6
Cell Technology	156mm x 156mm Polycrystalline Silicon; 54pcs (6x9)					
Pmax Temperature Coefficient	%/°C					-0.47
Voc Temperature Coefficient	%/°C					-0.34
Isc Temperature Coefficient	%/°C					+0.05
Maximum System Voltage	VDC					1000
Maximum Series Fuse Rating	A					13
Operating Temperature	°C					-40 ~ +85
NOCT	°C					45±2

STC: 1000W/m², AM1.5 and 25°C cell temperature; NOCT: Nominal Operating Cell Temperature

I-V CURVES



PHYSICAL CHARACTERISTICS Unit: mm(inch)



1. Tempered Glass
2. EVA (Ethylene Vinyl Acetate)
3. Solar Cells
4. EVA (Ethylene Vinyl Acetate)
5. Backsheet

Dimension	1482 x 992 x 42** mm (58.3 x 39.1 x 1.7 inch)
Weight	18.5 kg (40.8 lbs.)
Cable Length	900 mm (35.4 inch)
Bypass Diodes	3 pcs
Junction Box	IP65 rated
Front Glass	3.2 mm (0.1 inch) tempered low-iron glass
Frame	Anodized aluminum alloy

*Specifications are subjected to change without further notice
**50mm thickness aluminum frame is optional